

MULTI-USE TEMPERATURE LOGGER



Multi-Use Temperature Logger *The original LogTag. Suitable in any industry.*

TRIX-8

The LogTag® TRIX-8 is a versatile, wide range, multi-trip Temperature Recorder, featuring high resolution temperature readings over a measurement range of -40°C to +85°C (-40°F to +185°F).

The LogTag® TRIX-8 complies with the relevant international standards for temperature monitoring devices, such as FCC, CE, C-TICK, TÜV, EN12830, WHO PQS and RoHS.

- A real time clock provides date/time stamps for each temperature reading.
- Push-to-start button with optional delay or a specific time & date.
- Comprehensive customisation options including alert settings, sample interval and trip duration.
- Robust and durable polycarbonate case with lug for secure mounting.
- Up to 8,000 recordings - enough for the longest trip.
- In-transit inspections can be recorded at the push of a button.
- Complies with industry standards including EN12830.
- WHO PQS Pre-qualified under E06/06: PQS CODE E006/00.
- Industry best download time - less than 5 seconds for full memory.

LogTag Recorders



LTI-WiFi

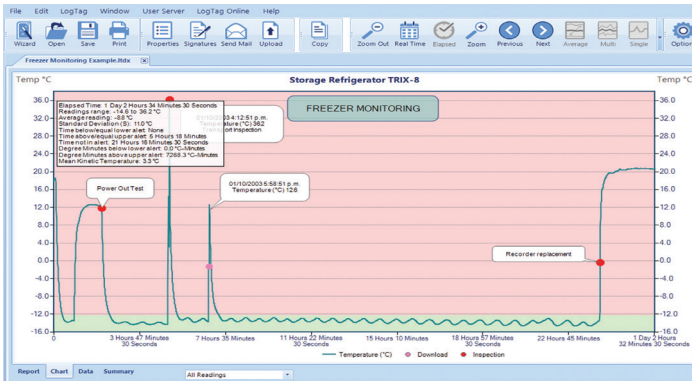
Dock a Logger and upload your data to LogTag Online on the go with the LogTag WiFi Interface. No computer required. Simply connect to a power source within range of your WiFi to start.



LTI-HID

An affordable modern accessory for any non-USB or WiFi Logger. Plug and play with no driver installation required and download your data within seconds.

Your data, anywhere, anytime.



LogTag Analyzer 3



LogTag Online

| | |
|---|---|
| Sensor Measurement Range | -40°C to +85°C (-40°F to +185°F). |
| Operating Temperature Range | -40°C to +85°C (-40°F to +185°F). |
| Storage Temperature Range | -30°C to +55°C (-22°F to +131°F). |
| Rated Temperature Reading Resolution | Less than 0.1°C for -40°C to +40°C. Less than 0.2°C for +40°C to +80°C. Less than 0.4°C for +80°C to +85°C. |
| Rated Temperature Reading Accuracy | Better than ±0.5°C for -20°C to +40°C. Better than ±0.7°C for -30°C to -20°C and +40°C to +60°C. Better than ±0.8°C for +60°C to +85°C. Better than ±0.9°C for -40°C to -30°C. |
| Sensor Reaction Time | Typically less than 5 minutes (T90) in moving air (1m/s). |
| Recording Capacity | 8031 temperature readings. 53 days @ 10min logging, 80 days @ 15min logging. |
| Sampling Interval | Configurable from 30 seconds to several hours. |
| Logging Start Options | Push button start or specific date & time. Optional start delay of up to 18 hours. |
| Recording Indication | Flashing 'OK' indicator / flashing 'ALERT' indicator. |
| Alarms | 1 configurable upper and 1 configurable lower alarms. |
| Download Time | Typically less than 5 seconds for full memory (8031 readings), depending on computer or readout device used. |
| Environmental | IP65 (roughly equivalent to NEMA 4). |
| Power Source | 3V LiMnO ₂ Battery. |
| Battery Life | 2 – 3 years of normal use (based on 15 minute logging, download data monthly). |
| Connection Interface | LTI-HID / LTI-WiFi |
| Software | LogTag Analyzer or LogTag Online |
| Size | 86mm(H) x 54.5mm(W) x 8.6mm(T). |
| Weight | 33g. |
| Case Material | Polycarbonate. |